



# **How have Environmental Assessments in Namibia influenced decisions? A critical look at 3 examples**

**EAPAN Conference  
October 2012**



# Objective

- ✖ Share examples of influence on the direction of a project.
  - ✖ NWR - Tungeni Golf Estate at Von Bach dam
  - ✖ Langer Heinrich Uranium Mine water supply improvement
  - ✖ DIAZ Wind Power Park at Lüderitz
- ✖ What was required to exert the influence.
- ✖ Lessons learnt from the process of influence.



# WNR – Tungeni Golf Estate at Von Bach

Community and user conflict

Development on a strategic water resource

Diffused future control of activities and responsibilities

Risk too high at a strategic level and cannot manage long term consequences.

**MOVE OUT OF THE DAM CATCHMENT AREA**



# LUM water supply improvement

Alternatives to secure water for expansion.  
Groundwater most likely immediate option from 2 Swakop river compartments

## Strategic consideration

Is the project sustainable within the context of the regional water resource scarcity?

## Project level consideration

If the project is not sustainable within the regional context, no further detailed assessment is required.

If the project is sustainable within the regional context a detailed assessment of the operational aspect can be completed.

## Environmental Management Plan

Detailed assessment is used to develop a Environmental Management Plan for implementation of the project.



# LUM water supply from the Swakop River

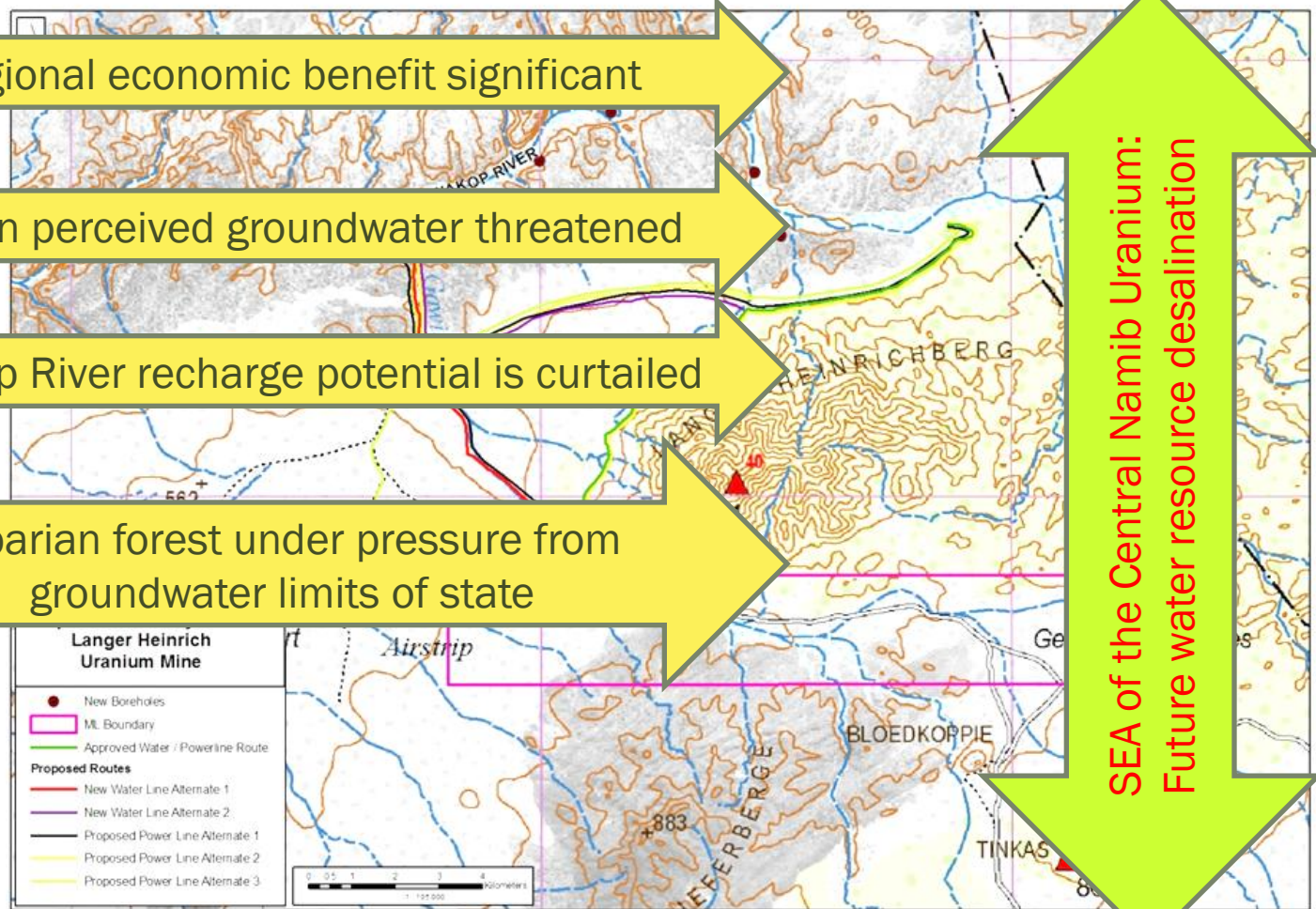
Regional economic benefit significant

Region perceived groundwater threatened

Swakop River recharge potential is curtailed

Riparian forest under pressure from groundwater limits of state

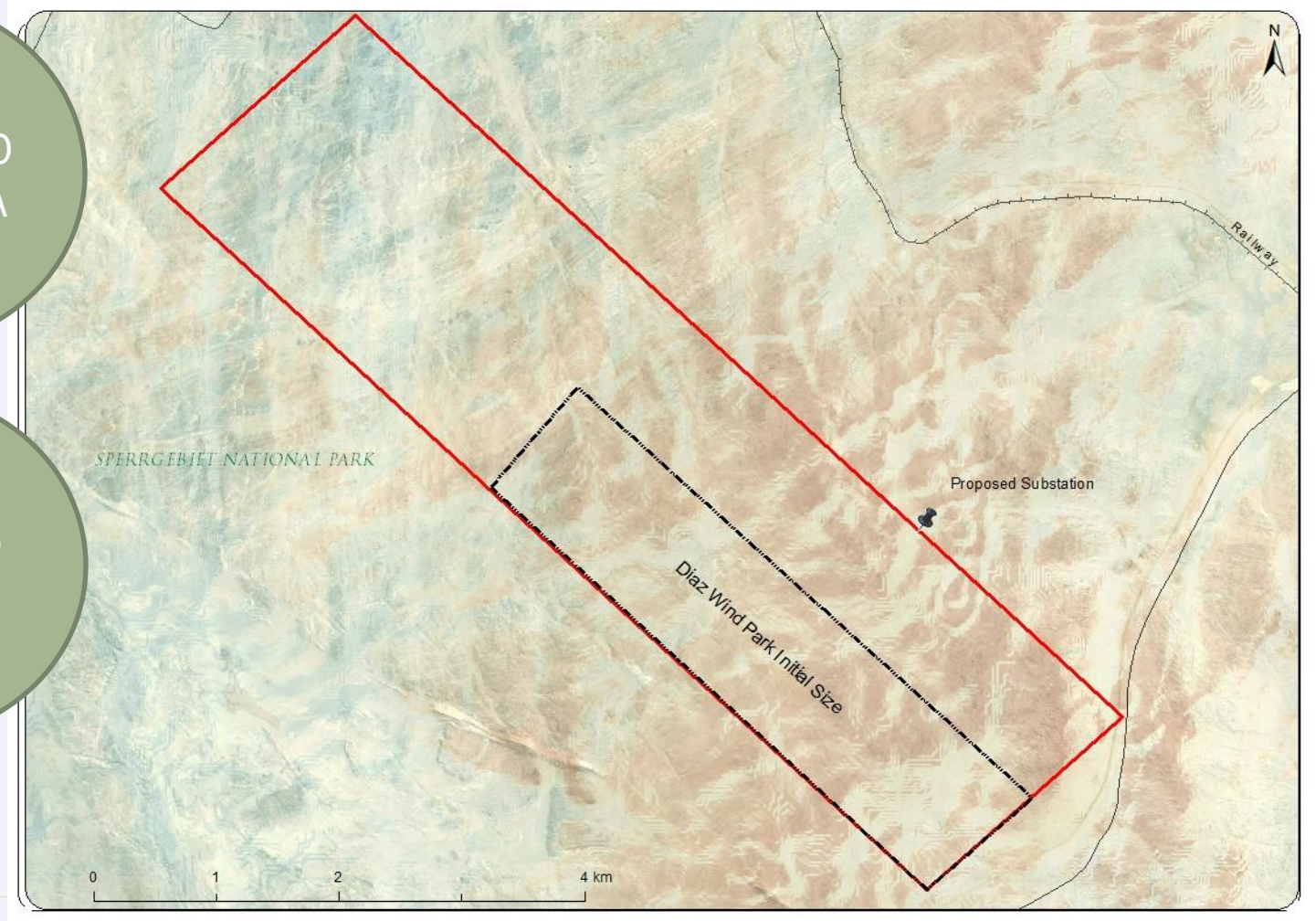
SEA of the Central Namib Uranium:  
Future water resource desalination



# DIAZ Wind Park

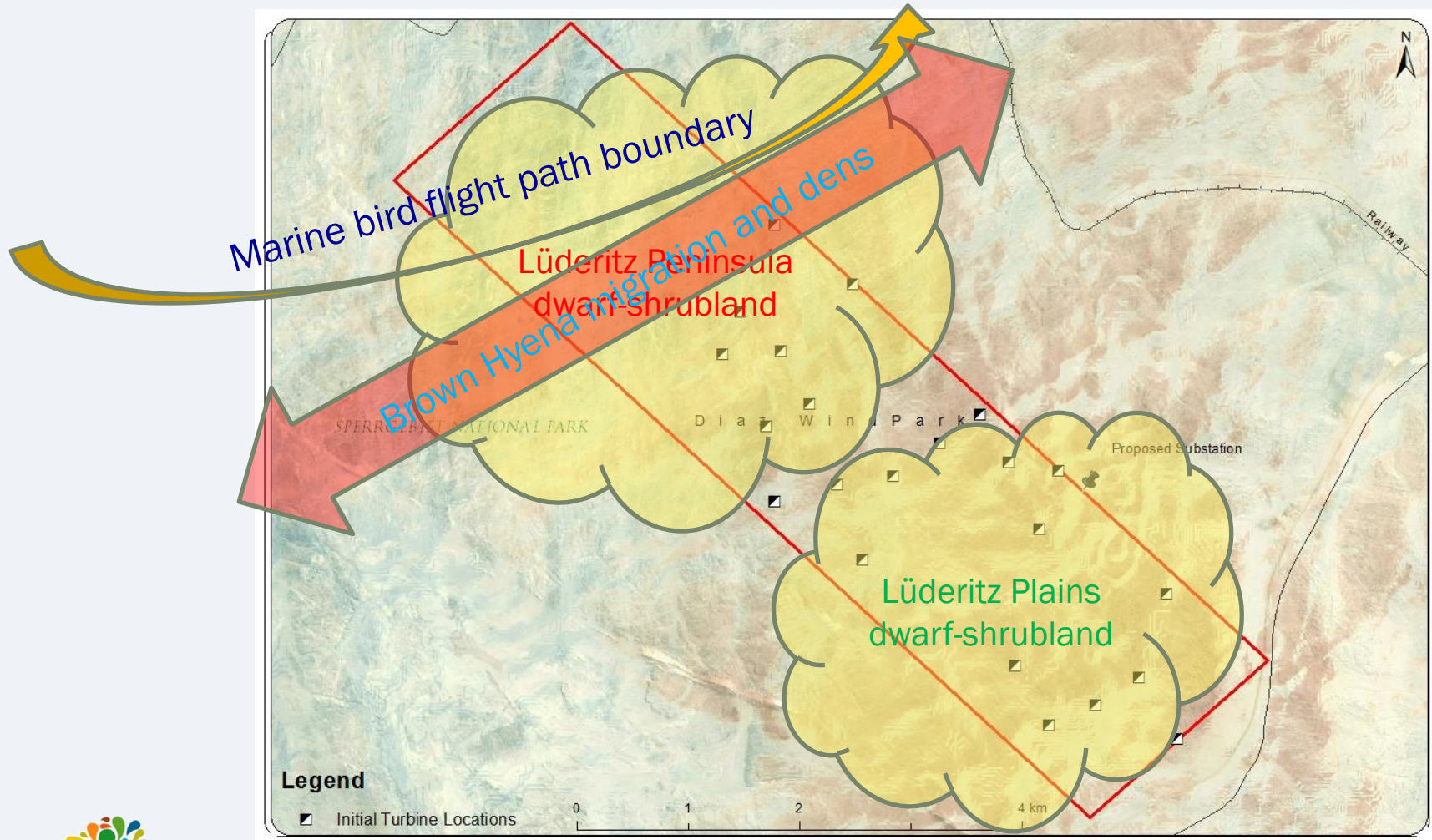
Inherited 10  
year old EIA

Significant  
changes to  
improve  
project



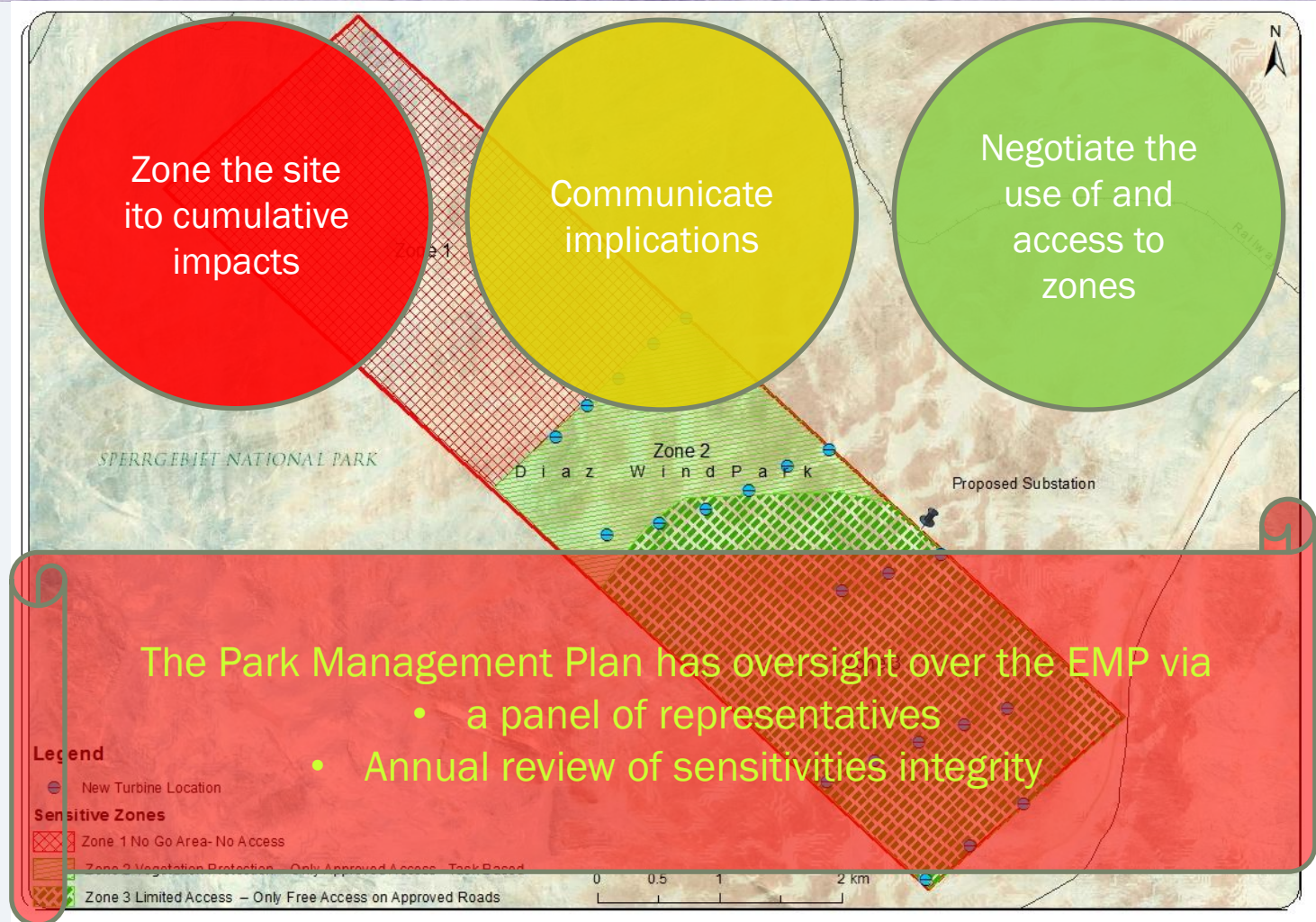


# Great idea, or is it?





# Long history now catches up with you, how do you stop the slippery slope?







# What was the drivers of influence

- × **Find the leverage point and persevere.**
  - × Don't miss the small stuff that can give big influence.
  - × Use resistance to find improvements. No is not an answer.
  - × Be open-minded without compromising on the change required.
  - × Communicating is a leverage point, so keep on talking
- × **Look beyond the obvious.**
  - × Don't miss trans-project issues, they give perspective.
  - × Understand where things come from, everything has a history.
- × **Use the right tools**
  - × Short steps that can be managed throughout the EA process
  - × Use historical and institutional tools to enforce your point of



# What was the lessons learnt

- × Use your information and insight to influence, not your emotions.
- × Take on the difficult ones.
  - × If you don't push to improve, no-one else will.
  - × Don't worry so much about the next job when you have this one
- × Is there anyone out there that will stand up for the environment?
  - × Your integrity will promote change and your reputation.
  - × All parties have rights, so does the environment.
- × Change is never perfect or static.
  - × The one LUM groundwater compartment is of very low quality and support alien invasive species. This is now protected.





# THANK YOU

**EAPAN Conference  
October 2012**